

# MULTICUT SOLO

THE FAST WORKSTATION FOR  
PROSTATE MORCELLATION



**JENA SURGICAL**  
LASER AT YOUR SIDE

# PLUG AND CUT

## MAXIMUM SAFETY, PERFORMANCE AND EFFICIENCY COMBINED IN A UNIVERSALLY USABLE SYSTEM

**JenaSurgical** introduces the **MultiCut Solo** – a morcellation system with very high efficiency and precision, which completes the **JenaSurgical** product line for holmium laser enucleation of the prostate (HoLEP) and thulium laser enucleation of the prostate (ThuLEP). Moreover, this tool can satisfy the need of morcellation that comes along with all other kind of prostate enucleations. It guarantees a fast and precise morcellation of tissue thanks to a specially developed technology: The MultiCut Solo works extremely fast, guaranteeing rapid workflow whilst at the same time ensuring maximum safety during surgery, which makes it one of the most efficient morcellation systems on the market.

The **MultiCut Solo** is offered with the corresponding MultiCut handpiece and the MultiCut blade at a specific length of 350 or 400 mm. Additionally, the morcellation system includes a control module with a peristaltic pump, a holder for the tissue waste container and an optional wireless footswitch. Reusability is our priority, which is why we provide a cleaning set for our morcellator blades. Disposables are only used where they grant advantages regarding hygienic aspects as with the sterile aspiration tube sets and the tissue waste containers.



### LIGHTWEIGHT HANDLE

Easy to use



# ADVANTAGES

- Compatible with any other laser system
- Reduced irrigation volume required
- Immediate removal of shredded tissue
- Increased safety by reduced chance of bladder collapse
- Highly efficient: streamlines the supplementary workflow

## TABLE-TOP DEVICE

Modern design

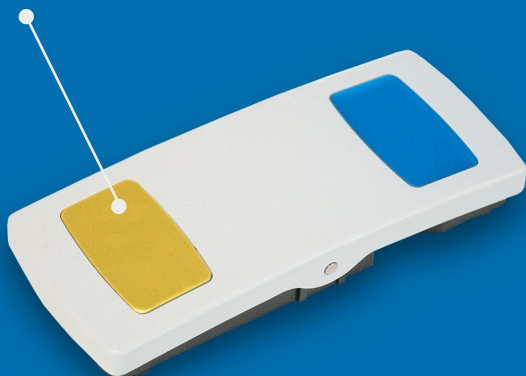
## PERISTALTIC PUMP-SUCTION

Highly efficient and additionally ensures a maximum of safety and protection against unintended bladder wall injuries



## WIRELESS FOOTSWITCH AVAILABLE

For more freedom of movement thanks to no cable hassle



## OPTIMIZED CUTTING GEOMETRY

with rotating blades



# ADJUSTMENT IS KING

The morcellator is being used for transurethral mechanical morcellation and removal of the adenoma after a successful enucleation of the prostate. Therefore, the tissue is cut into small

pieces by the rotating blade. Instantly, the shredded part is transported to the waste container by the suction power of the peristaltic pump.



## EASY TO USE DISPLAY

The surgeon can choose between **three different aspiration** levels. Moreover, the **MultiCut Solo** enables the user to adjust the **rotation speed** and the **oscillation frequency** of the morcellator blade according to the tissue consistency. The MultiCut Solo is able to optimally manage both soft prostate tissue and hard fibrotic prostate tissue.

## ASPIRATION AND MORCELLATION

Apart from this, the surgeon can choose between **two different functions** without looking away from the operation field. By choosing the yellow pedal of the foot switch, only **aspiration** is activated. With the blue pedal of the foot switch, the surgeon activates the **aspiration and morcellation simultaneously**.

# THE INDEPENDENT WORKSTATION

## COMPATIBILITY ALL THE WAY

For the first time, **JenaSurgical** offers a non-integrated morcellation system - the **MultiCut Solo**. It can be used to complete the set of instruments of an edourologist who is using a laser system without an integrated morcellator, even if it is not a system by **JenaSurgical**.

Due to its independence of any other system, the urologist obtains a perfect opportunity to enhance his set of instruments regardless of the preferred enucleation technique. In consequence, the surgeon will be able to do the morcellation of enucleated adenoma within the bladder in a more effective way.



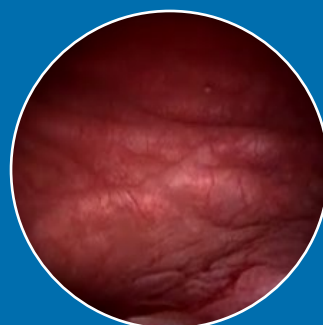
# CLINICAL CASES

---

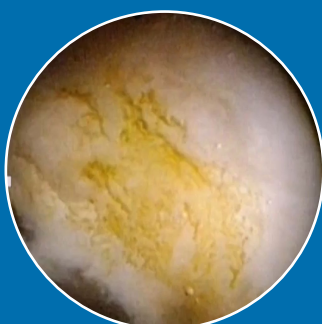
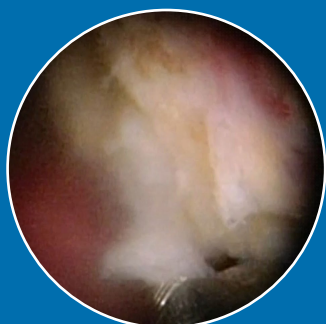
## MORCELLATION



Morcellation of prostate adenoma after holmium enucleation of the prostate with MultiPulse HoPLUS  
[Courtesy of Sven Piesche, MD – Clinic of Urology and Urological Oncology, Sana Klinikum Hof – Germany]



Morcellation, 250 cc adenoma, approx. 6 minutes after holmium enucleation of the prostate with MultiPulse HoPLUS  
[Courtesy of Edmundo Guarnizo Olivera, MD – Clinica Monterrico – Perú]



Morcellation of prostate adenoma after holmium enucleation of the prostate with MultiPulse HoPLUS  
[Courtesy of Martin Kanne, MD – Königin Elisabeth Herzberge Krankenhaus – Germany]

# TECHNICAL SPECIFICATIONS

MultiCut Solo	
Device Model	Table-top device
Control Panel	7" color touch screen
Cooling	Active Air Cooling
Accessories	Aspiration tube set, Waste container
Electrical Requirements	~100-240 V, 50/60 Hz, max. 65-90 VA
Weight	<10 kg
Dimensions	420 mm x 350 mm x 150 mm (W x D x H)
MultiCut Handpiece	
Rotation Speed	500 – 3,000 rpm ( $\pm 10\%$ )
Oscillation Frequency	0 or 2 - 5 Hz
Cable Length	3 m
Sterilisation Method	Steam sterilisation
Weight	330 g (without cable and blade)
Dimensions	30 mm x 200 mm (diameter x free length)
MultiCut Blades	
Dimensions and Weight	Blade 350 mm - 15 Fr x 350 mm (diameter x free length), 65 g Blade 400 mm - 15 Fr x 400 mm (diameter x free length), 75 g
Sterilisation Method	Steam sterilisation

All specifications are subject to change without notice.

**JENA SURGICAL**  
LASER AT YOUR SIDE

JenaSurgical is the brand of the surgical business unit of Asclepion Laser Technologies.  
This brochure is not intended for the market of USA.

**CE** 0123

7

**JENA SURGICAL**  
LASER AT YOUR SIDE

**DISTRIBUTED BY  
MAYUMANA HEALTHCARE B.V.**

MADAME CURIESTRAAT 22  
2171 TW SASSENHEIM  
THE NETHERLANDS  
TELEFOON: +31252 235 800  
EMAIL: INFO@MYH.HEALTH  
WWW.MYH.HEALTH

 **Mayumana**  
HEALTHCARE

MADE IN GERMANY  
ALWAYS THE LATEST PRODUCT INFORMATION



FOLLOW US

Asclepion Laser Technologies GmbH  
Brüsseler Str. 10  
07747 Jena | Germany

[www.jenasurgical.com](http://www.jenasurgical.com)