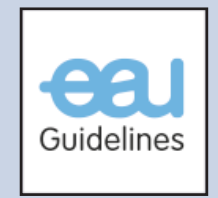


<sup>(1)</sup> Current standard/first choice.  
The alternative treatments are presented in alphabetical order.  
Notice: readers are strongly recommended to read the full text that highlights the current position of each treatment in detail.

**Laser vaporization** includes GreenLight thulium and diode lasers vaporization.  
**Laser enucleation** includes holmium and thulium laser enucleation.  
**HoLEP**: holmium laser enucleation; **TUIP** = transurethral incision of the prostate.  
**TUMT**: transurethral microwave therapy; **TUNA** = transurethral needle ablation.  
**TURP**: transurethral resection of the prostate.







**TECHNICAL SPECIFICATIONS**

Laser Type	200W Thulium laser
Operating mode	Continuous wave or pulsed
Power Output	From 5W up to 200W
Aiming Beam	532 nm (green)
Repetition Rate	10 - 100 Hz
Pulse duration	5 - 75 ms
Fibers	Bare-ended optical fibers with diameter up to 1000 µm
Electrical	230-208 VAC, 16/18 A, 50/60 Hz
Dimensions (H x W x D)	110 x 55 x 75 cm
Weight	200 kg



For more information visit [www.rocamed-urology.com](http://www.rocamed-urology.com)

 9 avenue Albert II  
MC 98000 Monaco
  (+377) 97 98 42 43  
(+377) 92 05 61 50 (fax)
  [customer@rocamed.eu](mailto:customer@rocamed.eu)
 [www.rocamed-urology.com](http://www.rocamed-urology.com)

HEMERA™  
Thulium Surgical Laser 200 W



» » » ENDO-UROLOGY



# HEMERA™

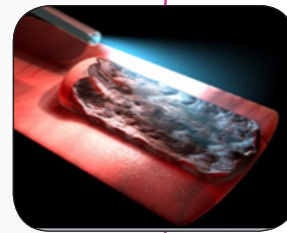
## Thulium Surgical Laser

200 W

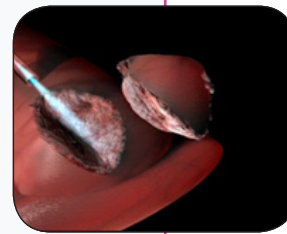


### SELECT YOUR TECHNIQUE

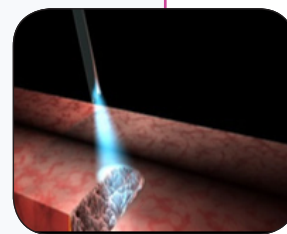
**Hemera™** is a new surgical laser from Rocamed, with a high performance and power up to 200W you can choose the type of technique you prefer: **Vaporization, Vaporessection or enucleation**. With the ability to emit a continuous mode or pulsed, **Hemera™** is a multidisciplinary excellence laser for each type of intervention.



⇒ VAPORIZATION - THUVAP



⇒ VAPORESECTION - THUVARP



⇒ ENUCLEATION - THULEP - THUVEP

### GREAT CUTTING AND ABLATION CAPABILITY

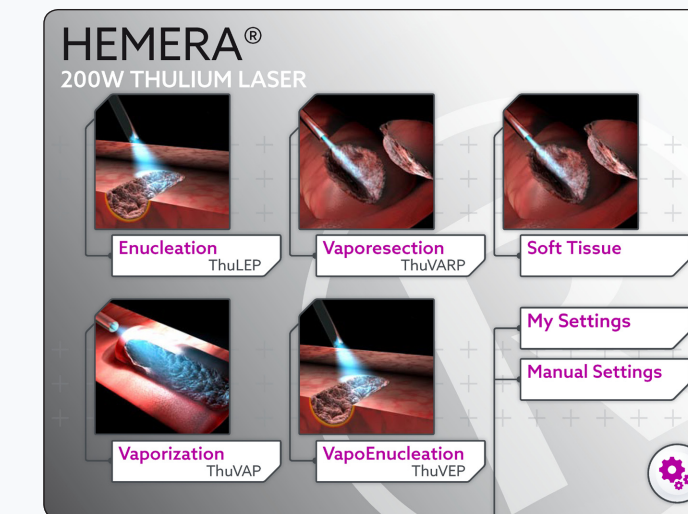
**The Hemera Thulium Laser** offers high-speed performance regardless of the size of the gland, vasculature and morphology. the surgeon can, then, choose whether to use vaporization, vaporessection or technical enucleation

### GREAT VAPORIZATION CAPABILITY

**Hemera Thulium Laser** remains effective even after many passages. Thulium laser is superior due to the possibility to emit both in continuous and pulsed mode. A continuous emission with the ability to vaporesect with lower costs due to the possibility of using multiple – time reusable fibers instead of disposable ones.

### WELL CONFINED COAGULATION AND EFFECTIVE HEMOSTASIS

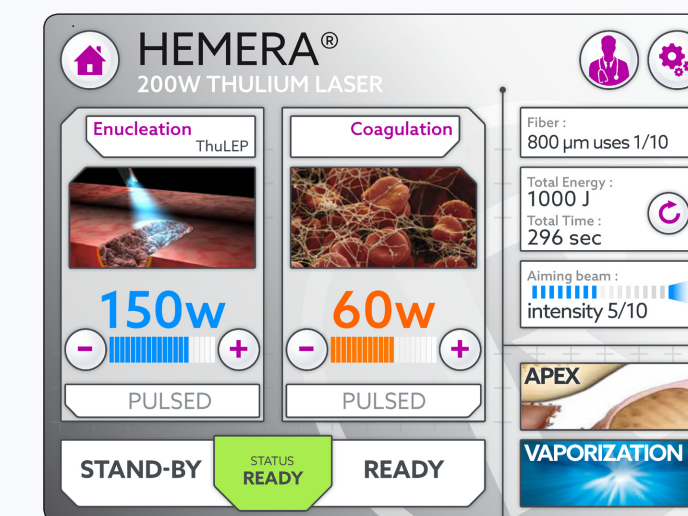
**Hemera Thulium Laser** emits energy more efficiently and more predictably on targeted tissue, independently from their blood percentage. The optical penetration depth is uniform. The technique of laser coagulation with Hemera Thulium Laser can be performed by directing the laser beam directly on the blood flow. The side effects of postoperative bleeding and dysuria are way inferior to those of each other laser method.



The intuitive screen is organized to give you the possibility to choice between:

#### Presettet or To Set

If your choice is «**Presettet Mode**» you will decide if you want to performe in enucleation or vaporization in just **2 steps**.



But if you prefer to set the laser by yourself, according to the type of intervention and surgical approach, you can still do it at any time choosing **Power** and if in **Continuous** or **Pulsed** mode.




### OPTICAL FIBERS RFID OR CODE PLUG

Optical fibers with frontal emission:

- Sterile
- **Single Use or Reusable**
- Core diameter from 550 μm to 1000 μm
- 3 meters long




### DOUBLE FOOTSWITCH

- Vaporization Ablation 
- Ready/Standby 
- Coagulation 



### STRIPPERS & SCISSORS FOR OPTICAL FIBERS

- Ceramic Scissors 
- Sterilizable Stripper
- Adjustable Stripper 