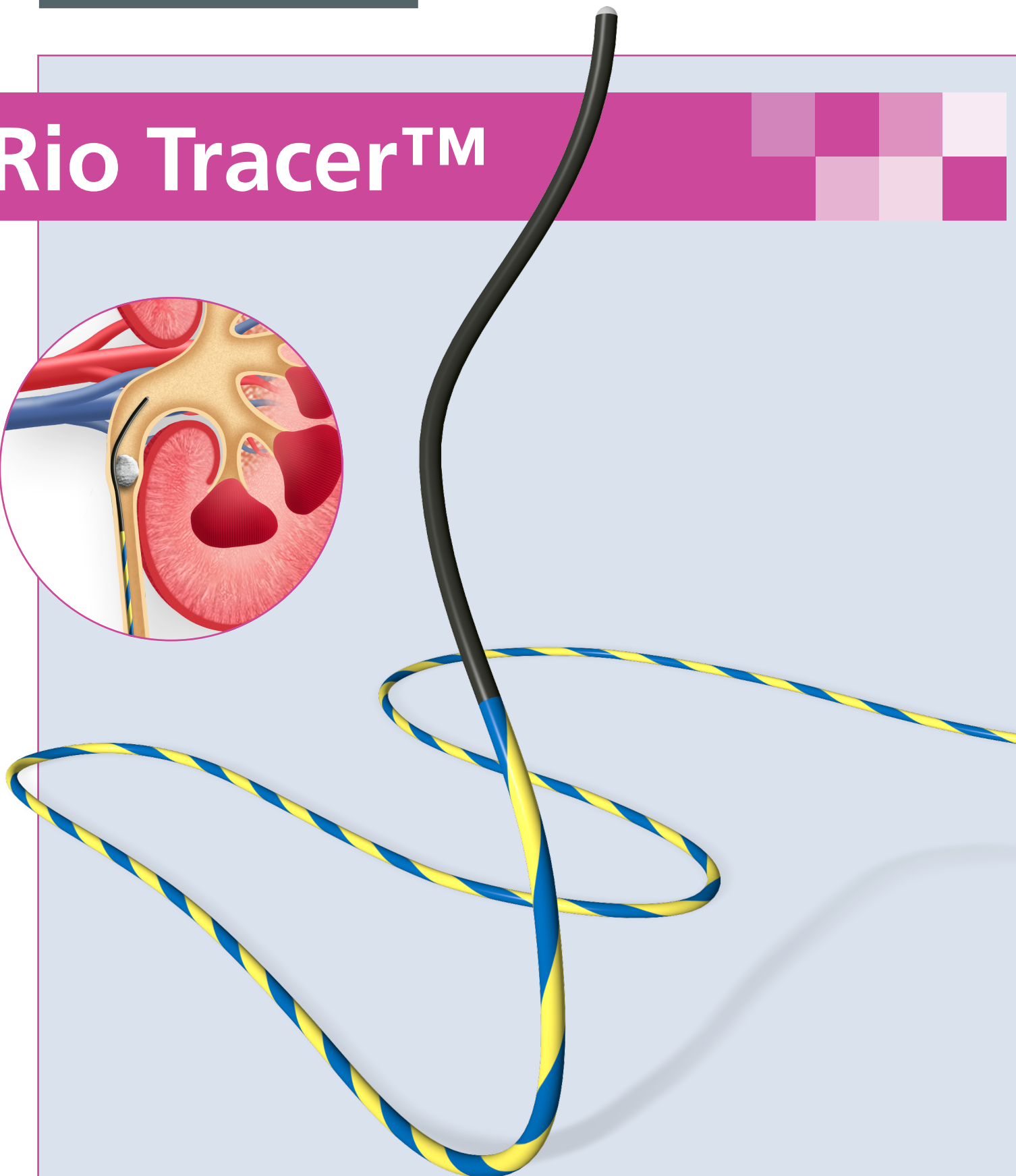
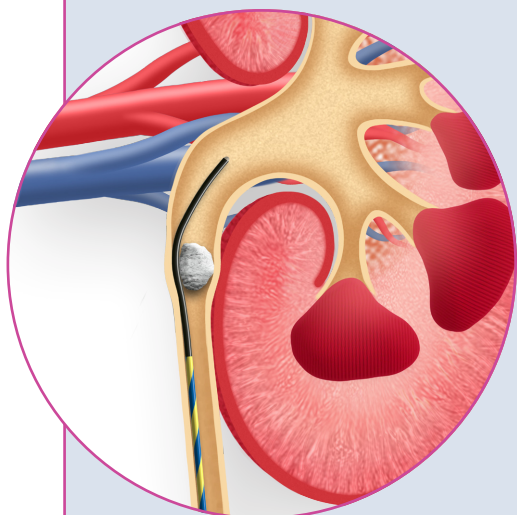


ROCAMED

Rio Tracer™



» » » ENDO-UROLOGY

www.rocamed.eu



Rio Tracer™

» **Hydrophilic Floppy Tip**

Facilitates passage beyond obstructions and negotiates tortuous anatomy

» **STIFF Nitinol Core**

Offers a kink resistant shaft for enhanced control

» **PTFE Coating**

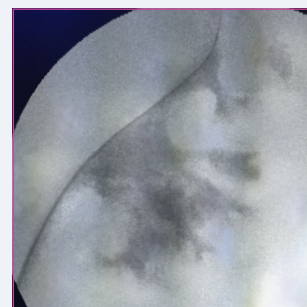
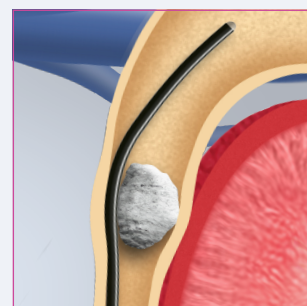
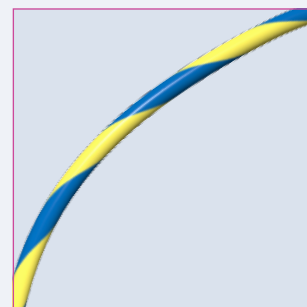
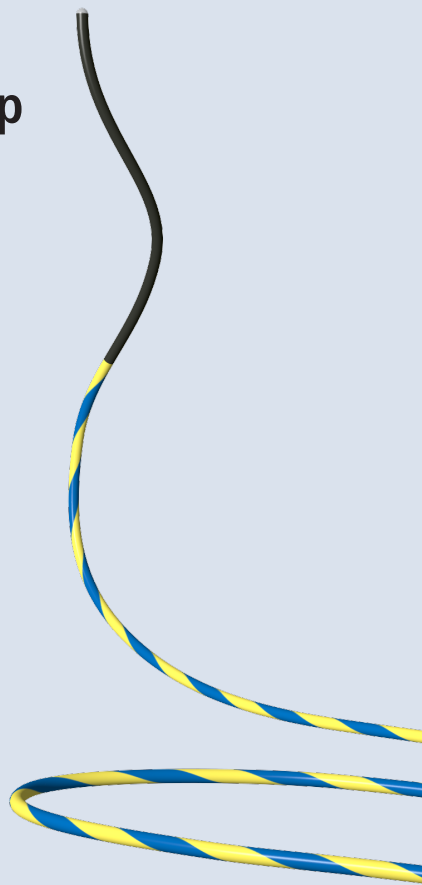
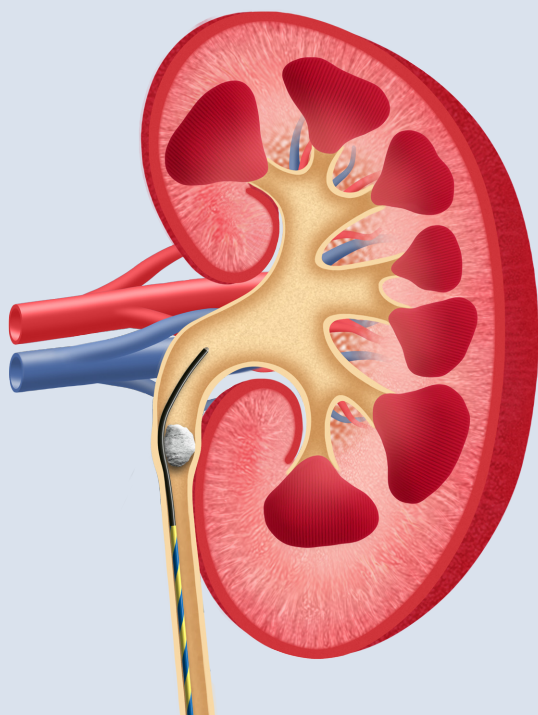
Offers a wire surface to facilitate advancement

» **Blue and Yellow striped pattern**

Designed to provide clear endoscopic visualization of wire movement

» **Barium Filled Radiopaque Tip**

Enhances Fluoroscopic Visualization



References	Distal Tip (3cm)	Ø (inches)	Length (cm)
ROWR3500ST	Hydrophilic Dual Flexible		
ROWR3501ST	Hydrophilic Angled /Straight Dual Flexible	0,035	150
ROWR3502ST	Hydrophilic and Floppy		

